

## REGIONAL UPDATES

June Quarter 2011

Central Queensland

## EXPLORATION AND NEW DEVELOPMENTS

### Minerals

**ActivEX Ltd** has commenced a 1000 m core drilling program at **Barambah** gold-silver prospect, located about 113 km southwest of Bundaberg. The program is designed to test extensions of high grade gold-silver epithermal mineralised veins between 130 and 180 m depth, extending south from the open pit.

**Archer Resources Ltd** has announced significant rock chip sample and geochemical soil survey results for the **Rossmore** silver prospect, located about 47 km west-southwest of Monto. One mineralised rock sample (DR4849) from a mullock dump associated with historic mine workings assayed 0.9% silver, 7.7% copper and 2.8% zinc. The soil sampling program indicated elevated silver and copper around the workings and another significant soil anomaly about 400 m to the northeast of the workings which remains open to the north and east. Archer Resources plan to raise \$6 million through an IPO and ASX listing later in 2011.

**AusNiCo Ltd** has completed three drill holes at the **Boyne River North** (EPM 16077) gold-PGE prospect. The holes intersected variably bleached and chlorite/epidote altered and brecciated serpentinite/greenstone with zones of moderate quartz veining, thin granitic dykes and disseminated pyrite. No significant assay results were reported.

**Aussie Q Resources Ltd** has announced 240% increase in total mineral resources at the **Greater Whitewash** molybdenum-copper-silver project near Monto. The new estimate of 242 Mt (previously 71.5Mt) grading 258 ppm molybdenum, 1173 ppm copper and 1.54g/t silver includes 185 Mt in the Indicated JORC Code category. Contained metal in the resource totals 62,400 t molybdenum, 284,000 t copper and 12.05 Moz silver. The resource estimate is based on 62,000 m of drilling over a 5 km by 1 km area and includes *Gordon's*, *Whitewash*, *Whitewash South*, *Whitewash Southwest* and *Windmill Hill* mineral deposits.

The new resource also included a high grade near surface zone containing 10 Mt grading 431 ppm molybdenum, 1703 ppm copper and 2.02g/t silver, suitable for open cut mining. Aussie Q Resources has commenced metallurgical test work on the ore from Greater Whitewash to assist in determining the most practical beneficiation process. Further infill drilling will be undertaken in the September quarter to test the continuity of mineralisation between mineral deposits within the Greater Whitewash area.

**Eastern Iron Ltd** has completed 23 of the planned 31 RC holes (totalling 3500 m) at the **Eulogie Park** magnetite-titanium-vanadium deposit. The drilling is designed to test the mapped outcrop of magnetite-bearing ferrigabbro and provide an estimate of grade and tonnage in this portion of the resource. Preliminary metallurgical (Davis Tube Recovery) testwork on drill core samples from previous drilling suggests around 70% of the iron is recovered to the concentrate at a grind size of 150 micron. The higher titanium content (6-7% TiO<sub>2</sub>) at Eulogie Park compared to Hawkwood (2-3% TiO<sub>2</sub>), reduces the iron content of the concentrate and is less favourable as an iron ore feedstock.

Davis Tube Recovery results on recent drill core samples from [Hawkwood](#) confirm a high grade iron ore concentrate (66.6% Fe, 1.8% SiO<sub>2</sub> and 1.7% Al<sub>2</sub>O<sub>3</sub> and <0.001% P) can be recovered. A resource drilling program is scheduled to start in August 2011.

Development of a new decline commenced during the quarter to establish the Roses Pride deposit as an additional mining front for [Cracow](#) gold mine (**Newcrest Mining Ltd** 70% and **Catalpa Resources Ltd** 30%). A total of 18 underground holes drilled for 27461 m were completed to support an upgrade of the Kilkenny and Tipperary resources. Significant true width intersections included; 16.0 m grading 7.4g/t gold from 101.7 m depth (hole KKKU137A) and 7 m grading 12.0g/t gold from 163.1 m (hole KKKU133).

Resource definition drilling continued at Klondyke North with 35 holes totalling 3110 m completed. One drill intersection included 5.05 m grading 6.31g/t gold from 59.5 m depth (hole KN0056). Surface exploration drilling totalling 14 holes were completed at Kilkenny SE-Airstrip Corridor, Cracow South and Golden Plateau, with results confirming epithermal quartz vein structures continue to the south of the known Cracow Goldfield.

Four of the five planned resource extension drill holes have been completed at the [Mount Cannindah](#) copper-gold project (**Planet Metals Ltd** and **Drummond Gold Ltd** with a right to earn a 75% interest). The initial results indicate that the mineralisation continues south and at depth from the defined resource. Best assay received during the quarter included 23 m grading 0.4% copper, 0.4g/t gold and 6.4g/t silver from 385 m depth (hole CARCD0002). A new interpretation of the deposit style indicates brecciation of the host rocks was caused by upwelling of pressurised mineralised fluids and dykes from depth, with at least four distinct episodes of chalcopyrite-bearing veins identified.

**Solomon Gold Plc** has announced resource estimate increases for the *Crunchie* and *Kauffmans-Homestead* gold deposits within the [Rannes](#) gold project north-west of Biloela. The new Inferred resource at Crunchie is 5.77 Mt grading 0.47g/t gold and 45g/t silver for 87,190oz gold and 8.35 Moz silver. The new Inferred resource at Kauffmans-Homestead is 9.04 Mt grading 0.64g/t gold and 8g/t silver for 186,110 oz gold and 2.33 Moz silver. The estimates used a gold to silver ratio of 1:40 and a 0.35g/t gold equivalent cut-off grade.

A 14-hole resource extension drilling program is underway at Kauffmans-Homestead. Assays from one of the completed holes (KAU90; 20 m grading 8.44g/t gold and 12.1g/t silver from 88 m depth) suggests significant gold-silver mineralisation exists below the current resource.

**Zamia Metals Ltd** has announced a 12% increase in the Inferred Mineral Resources at the [Anthony](#) molybdenum deposit. The new estimate of 260 Mt grading 400 ppm molybdenum includes primary sulphide, transition and oxides material and contains a high grade resource of 23 Mt grading 810 ppm molybdenum. Contained metal in the deposit totals 104,800 t molybdenum.

A new 15-hole drilling program commenced during the quarter to test extensions to a depth of 550 m and is expected to provide an increased tonnage of higher grade molybdenum mineralisation. Significant down-hole intersections from holes completed in the quarter included; 159 m grading 655 ppm molybdenum from 87 m depth (hole RC90), and 147 m grading 344ppm molybdenum from 105 m depth (hole RC93).

## Coal

**Aquila Resources Ltd** and **Vale Australia Ltd** have released the key findings of a comprehensive study undertaken by the JV manager of the **Eagle Downs** underground coal project. The proposed longwall mine will initially produce 4.5 Mtpa of saleable coking coal from the Harrow Creek Upper Seam from 2016 and export through the Wiggins Island Coal Terminal Stage 2 facility. Construction may commence in mid-2012 with \$1.25 billion of capital expenditure required. A Bucyrus electric dragline has been commissioned at the **Isaac Plains** mine and commenced operations in the N1 pit during the quarter. The dragline is expected to increase coal product output at Isaac Plains to about 2.8 Mtpa and help reduce the cost of shifting overburden as mining goes deeper.

A Mining Concept Study has been completed for the **Talwood** coal project (**Aquila Resources Ltd**). The study identified potential for a longwall operation (with northern and southern mine areas) producing 3.6 Mtpa coking and thermal coal product from the Upper Leichhardt Seam. Construction of the Coal Handling and Processing Plant (CHPP) and mine, could begin in early 2014, with first coal mid-2015, subject to approvals.

The Draft EIS document for the **Washpool** coal project was released during the quarter. The proposed open cut mine will produce 2.6 Mtpa of hard coking coal from 7.2 Mtpa ROM coal from the Scorpio Seam within the Burngrove Formation. Mine construction may commence in mid-2012 and will require about 310 workers. The mine will require up to 390 operational staff over 16 years, with first coal is expected in mid-2013.

**Australia Pacific Coal Ltd** has completed four drill holes totaling 636.5 m at the **Cooroorah** coal deposit, located about 16 km north northeast of Blackwater. Three of the holes were targeting shallow coal seams within Burngrove Formation in the northeastern portion of EPC 1827. Two northwest dipping coal seams (Leo and Aquarius) were intersected by the drilling. A 2 m thick section (with 1.7 m of net coal) of the Leo Seam was intersected in one (RDH01C) of the holes. The Aquarius Seam is 3 to 5 m thick and comprises six to eight coal plies. Core samples taken will be used for wash plant recovery and coal quality test work.

**Bandanna Energy Ltd** has announced a 79% increase in Indicated coal resources and a 15% increase in total coal resources at the **Springsure Creek** (EPC 891) underground coal project. The new Indicated resource estimate of 129.5 Mt (previously 72.2 Mt) follows the completion of 17 drill holes targeting the Aries 2 Seam. The new total resources estimate of 374.5 Mt includes Inferred resources of 245 Mt. A 108% increase in Probable Coal Reserves, now about 108 Mt was also announced. Six partially cored holes totaling 603 m were completed during the quarter at the **Dingo West** (EPC 881) coal deposit. A Mining Lease (ML 80179) application for the mine projects was lodged in July 2011.

**BHP Billiton Mitsubishi Alliance** has commenced construction on the **Daunia** open cut coal mine and **Broadmeadow** underground coal extension project. At the end of the quarter overall project was 11% completed for Daunia and 32% completed for Broadmeadow.

The Department of Environment and Resource Management has released the EIS draft Terms of Reference for the **Minyango** coal project (**Caledon Resources Plc**). The proposed underground longwall mine near Blackwater, plans to extract up to 9 Mtpa of run-of-mine coal, which would be processed to produce up to 7.5 Mtpa of coking and thermal coal for export. A mine life up to 40 years is possible, depending on the mining schedule from the second coal seam.

**Carabella Resources Ltd** has completed 25 drill holes at the [Grosvenor West](#) coal deposit (EPC 1069). Significant results were obtained from 12 holes including intersections of 8 m in two coal seams (Goonyella Lower and Goonyella Lower B) between 111 and 145 m depth. Coal samples taken from cores have been analysed for raw coal quality parameters and have confirmed the coking properties of the target seams. Total coal resources for the deposit have been upgraded to 95.3 Mt including 13.6 Mt of Measured resources, 18.5 Mt of Indicated resources and 63.2 Mt of Inferred resources.

**Cockatoo Coal Ltd** has announced a 148% increase in Measured and Indicated Resources at the [Baralaba](#) coal mine. The new estimate of 13.1 Mt (previously 5.3 Mt) lies within operating mine areas of ML 5605 and ML 80157. Eight cored drill holes totalling 814 m were completed at Baralaba, with cumulative down-hole coal intercepts averaging 5.4 m. Ten cored holes totalling 1031 m were completed at [Baralaba North](#), with cumulative down hole coal intercepts averaging 3.2 m. Four exploration rigs are operating in the Baralaba mine and Baralaba North project areas, primarily carrying out coal quality coring (slim and large diameter) for raw coal and washability data.

Resource definition drilling continued at the Alambi coal deposit (northern half of the [Blackall](#) coal project) by **East Energy Resources Ltd** with 12 chip and 27 partially cored drill holes completed during the quarter. Drill spacing has been reduced to 2 km intervals to increase confidence in the geology and to provide additional samples for coal quality analysis.

**Endocoal Ltd** has announced a maiden resource estimate for the [Rockwood](#) coal deposit, believed to be within the Moranbah Coal Measures. Total coal resources of 51.6 Mt includes; 18.6 Mt as Indicated and 33.0 Mt in the Inferred JORC Code category. Drilling during the quarter confirmed the presence of an anticline structure bounded by faults, as initially identified and interpreted from the 2010 drilling program. Multiple coal seams (25 identified to date) have been logged in holes drilled to a total depth of 330 m. A significant number of these seams are greater than 2 m in thickness. Coal quality analysis results for the 2011 drill program indicate that Rockwood is likely to be a PCI coal deposit.

Step-out and infill drilling continued during the quarter at the *Meteor Downs South* and *Inderi* coal deposits (comprising the [Orion Downs](#) coal project). At Meteor Downs South drilling suggests that the resource is both larger and more continuous than previously thought. Endocoal has commenced a Bankable Feasibility Study for the proposed open cut mine, which does not require a public EIS. At Inderi three drill holes intersected thick coal sections (4.5-5.3 m) at depths averaging 135 m, up to 200 m outside the previously identified southern-edge of the resource boundary. A resource estimate upgrade was announced for the Orion Downs project which now contains 16.8 Mt Measured, 10.8 Mt Indicated and 8.4 Mt Inferred coal resources.

**Hancock Coal Ltd** has commenced bulk coal sampling from a test pit at the \$7.9 billion [Alpha \(Tad's Corner\)](#) coal project. More than 100 people will be employed at the test pit to extract up to 150,000 tonnes over the next three months. Some 100,000 tonnes of processed ('product') coal will be railed to Gladstone and then shipped to several Asian power stations for performance evaluation.

**International Coal Ltd** has successfully raised \$9 million through an IPO on the Australian Stock Exchange to explore for and develop coal resources in the Maryborough and Eromanga basins in Queensland. The company has acquired two granted EPC's ([EPC 2194](#)

and 2196) and an EPC application (EPC 2195) covering about 370 km<sup>2</sup> near Bundaberg in the Maryborough Basin. Exploration efforts will target potential open cut coking coal within the Burrum Coal Measures.

**Macarthur Coal Ltd** and **Gloucester Coal Ltd** have commenced small-scale operations at the [Middlemount](#) mine, producing 51,000 t of saleable coal during the quarter. The coal was exported via trucks to a third party rail load out and then shipped via the Dalrymple Bay Coal Terminal. Overburden stripping commenced in April 2011 and the first coal was mined in June 2011. A Supplementary EIS document has been prepared for the Middlemount Mine expansion project. Works on the construction of a workshop and maintenance facility were substantially progressed during the quarter and the JV is confident the 16.5 km Rail Spur will be completed late in 2011.

A drilling program was completed at [Olive Downs North](#) during the quarter, while resource definition drilling and large diameter core drilling commenced at the [Olive Downs South](#) and [Codrilla](#) coal project areas (**Macarthur Coal Ltd**). The coal resource estimate at [West Rolleston](#) has increased by 361% to about 369 Mt, (previously 80 Mt) and includes 47.2 Mt in the Measured and 106 Mt as Indicated JORC Code category. Coal resources at [Vermont East/ Willunga](#) has increased by 202% to about 498 Mt (previously 165 Mt) and includes 170 Mt in the Measured and about 124 Mt as Indicated JORC Code category.

**Meijin Energy Ltd** has announced, through media reports, a new coal project ([China Stone](#)) located about 240 km northwest of Clermont, in the north eastern Galilee Basin. Drilling over the past two years, within EPC 987, has identified a JORC compliant resources totalling 3700 Mt that could support a 30 to 60 Mtpa coal operation. The company plans to commence a Feasibility Study in 2011 and is targeting construction in 2013 and production in 2015, subject to approvals.

**New Hope Corporation Ltd** has announced initial Coal Reserves and a 236% increase in Total Coal Resources at the [New Lenton](#) coal project. The latter estimate is now 282 Mt (previously 84 Mt) and comprises 53 Mt in the Measured, 144 Mt as Indicated and 85 Mt in the Inferred JORC Code resources category. Coal Reserves (as subset of the Coal Resources) total 52 Mt (21 Mt as Proven and 31 Mt as Probable). Final results for the 3D seismic surveys were received during the quarter. Several structural features are evident but the results indicate that conditions are conducive to open cut and/or underground mining. A 1055% increase in coal resources at the [Bee Creek](#) coal deposit (EPC 777) has also been announced. The new Inferred resource estimate of 104 Mt lies within coal seams of the Rangal Coal Measures.

**Newland Resources Ltd** could only complete three holes in the southern portion of the EPC 1230 ([Comet Ridge](#) coal prospect) due to wet weather and poor access conditions. One drill hole (CR036C) recovered core samples from the Fair Hill Seam and underlying B Seam. Initial coal quality testing suggests a semi-soft coking coal product could be recovered using a dry separation technique. Drilling during the September quarter will target areas where the Fair Hill Seam lies within 50 m of the surface.

**Stanmore Coal Ltd** has expanded the planned 26-hole drilling program at the [Mackenzie](#) coal deposit (EPC 1060) to 40 holes. The extension of the original program will allow further testing of the northern Exploration Target and allow the definition of new zones of coal that have been identified in that area. In-fill drill results to date, have met expectations and an updated JORC Resource statement will be available in the September quarter 2011.

Seven out of eight holes planned have been completed at the [Tennyson](#) coal prospect (EPC 1168) near Emerald. Drilling results have exceeded expectations with several holes intersecting multiple coal seams. Intersections include: Aries Seam averaging 2.5 m in thickness, Corvus Seam 2.6 m and the Liskeard Seam 2.1 m. The drilling program is being expanded up to 28 holes to enable a JORC Code Inferred Resource estimation for the Aries Seam in the December quarter 2011.

**Stanmore Coal Ltd** has completed three out of five scout holes planned for the [Belview](#) coal prospect (EPC 1114), south of Blackwater. Initial drilling has intersected the Aries Seam (2 to 3.5 m in thickness) and Gemini Seam (up to 6 m in thickness) between 562 and 814m depth. Laboratory testing of the drill core samples is underway to confirm potential coking properties of the seams.

**Wesfarmers Ltd** has completed 35 drill holes at [Curragh West](#) to better define the coal quality within the Burngrove Formation. Some 27 holes to target infill structural definition and for coal quality analysis were completed at [Curragh North](#).

**Xstrata Coal Ltd** has submitted a Referral of Proposed Action (under the EPBC Act) to the Federal Government relating to the [Rolleston](#) coal mine expansion project. The project aims to mine the coal reserves in the areas of two adjacent mining lease applications and increase production from about 8 Mtpa up to 20 Mtpa of thermal coal from between five and ten open cut pits, that would either be extensions to existing pits or adjacent to the existing mine. Xstrata plans to start mining in the expansion areas by 2015, subject to gaining the necessary approvals. The project is currently under going Feasibility Studies and will require an EIS.

A Referral of Proposed Action has submitted to the Federal Government relating to the Newlands Coal Mine Extension Project (**Xstrata Coal Ltd**). The project aims to extend mining into areas adjacent to the existing [Newlands Northern](#) underground and [Eastern Creek](#) open cut mines. The Eastern Creek Extended project involves mining up to 5 Mtpa over 27 years from three new open cut pits (within MLA 10352) commencing in 2016. The Northern underground extension project involves extending longwall mining to the east and south of the existing site. It is anticipated that the extended underground mine will commence operation in 2013 and will produce a coal volume of up to 6 Mtpa.

## **Petroleum and coal seam gas (CSG)**

Pilot production dewatering of the Monslatt-4P, 5P and 7P wells continued during the quarter at the [Monslatt](#) CSG project (**Blue Energy Ltd**). The company has announced initial 3P reserves of 39 PJ within the [Sapphire](#) CSG project and a 284 PJ 3C contingent resource. The 3P reserves are within the Fort Cooper and Rangal Coal Measures. The first appraisal and pilot well (Sapphire-4) for the field is expected to be drilled during the September quarter. An initial 3C contingent resource of 554 PJ has been estimated for “[Myross](#)” (ATP 813) in the Galilee Basin based on five wells completed by Blue Energy in 2010.

Several pilot production programs are underway at the [Blackwater](#) CSG project (**Bow Energy Ltd**) with 10 wells in various stages of dewatering. Bow has announced a 151% increase in 2P reserves; now 148 PJ (previously 59 PJ) and updated 3P reserves of 2480 PJ for the Blackwater and Comet fields. Lateral pilot production well BWP-39 was completed during the quarter and intersected about 560 m of net coal. Construction and pre-

commissioning works on the Blackwater Power Station are expected to be completed during the September quarter. Commissioning of the power station is scheduled for early 2012.

Bow Energy has announced initial 2P reserves of 35 PJ and 3P reserves of 163 PJ of the [Norwich Park](#) CSG project (ATP1031). The certified reserves area covers the Vermont CSG Field, located in the western section of the tenement. Appraisal is yet to commence on the Dysart CSG Prospect, located in the north eastern section of the tenement. Bow Energy is expecting to commence a pilot production program at the Vermont Field late in the September quarter subject to land access.

**Bow Energy Ltd** has submitted a Referral of Proposed Action (under the EPBC Act) to the Federal Government relating to the development of the Blackwater and Norwich Park CSG fields and construction of two gas pipelines. A 51 cm diameter, 250 km [Blackwater to Gladstone gas pipeline](#) and a 30 cm diameter, 95 km [Norwich Park to Blackwater gas pipeline](#) are proposed. Gas field development may require drilling up to 1500 wells over 25 years commencing in the second half of 2012.

Post exploration well testing has confirmed that both Cuisinier-2 and 3 appraisal wells (**Santos Ltd, Victoria Petroleum NL, Bow Energy Ltd and Bengal Energy Ltd**) in the Cooper Basin, have produced oil and will be placed on pump with oil piped to the [Cuisinier Oil Field](#) lease area (PL 303). The results to date from the new Cuisinier appraisal wells indicate that at least a 19 m gross oil column exists within the upper Murta oil zone originally found in Cuisinier-1. Additionally, lower Murta oil pay, as demonstrated by Cuisinier-2, looks to extend as much as 21 m deeper. First oil production from the new Cuisinier wells is expected during the September quarter. The Barta North-1 appraisal well has been completed as a pumping oil well and the operator is reviewing facilities connection options.

**Exoma Energy Ltd** has completed two of 12 planned exploration wells in the Galilee Basin. [Saltern-1](#) and [Wonganella-1](#) were drilled to a depth of 938 m and 1303 m respectively, targeting CSG-bearing Betts Creek and Aramac coal measures. Wonganella-1 intersected 26.5 m of net coal. Some 17 metres of coal core samples were placed in canisters and are presently desorbing gas. Drilling of the [Bessies-1](#) exploration well, about 100 km west of Longreach, commenced in July and will target the shale gas-bearing Toolebuc Formation.

Initial resources estimates have been announced for the [Rodney Creek](#) CSG project (**AGL Energy Ltd and Galilee Energy Ltd**). A Contingent Resource of 259 PJ of 2C and 1090 PJ of 3C Resources (technically recoverable) cover an area of 450 km<sup>2</sup> within ATP 529. A three-hole step-out drilling program is expected to commence in the September quarter.

**Santos Ltd and Origin Energy Ltd** have completed four appraisal wells (Hilltop-3, 4, 5 and 6) at the [Arcadia](#) CSG field, one appraisal well (Clematis Creek East-1) at [Comet Ridge](#) CSG field and nine appraisal wells (Spring Rock-3, 4, 5 and 6, Doce Hill-1, Moonah-2, Springwater-5 and 7A and Fairview-119 ) at the [Fairview](#) CSG field. Fifteen development wells were also completed at Fairview field, which achieved average gas sales of 116 TJ/day.

**Sentry Petroleum Ltd** has completed two CSG exploration wells ([Talundilly-1](#) and [Albilbah-1](#)) in ATP 862 within the Eromanga Basin, about 100 km west of Blackall. Talundilly-1 was drilled to a depth of 436 m and intersected 12.7 m of net coal within the Winton Formation. Albilbah-1 drilled to a depth of 474 m and intersected 10 m of gas-bearing coal and carbonaceous shale, as well as 6 m of gas-bearing sandstone. All gas-bearing samples canistered immediately for gas desorption measurements. Independent

reserve certifiers have estimated Sentry's two permits (ATP 864 and 862) could contain potential recoverable gas resources of 2000 to 2900 PJ.

**WestSide Corporation Ltd** and **Mitsui E&P Australia Ltd** has completed drilling the fifth new dual-lateral production well; Pretty Plains-2 and completed work-overs on an additional 10 existing wells and returned them to pump at the **Meridian** CSG Field. Three exploration wells (MER-05X, MER-09X and MER-14X) were also completed. All wells intersected the targeted Baralaba Coal Measures and Kaloola Formation with total net coal measured between 16 and 21 m which was greater than forecast. WestSide Corporation has announced a 93% increase in certified Proved and Probable (2P) gas reserves from 224 to 433 PJ for the Meridian CSG Field. 3P reserves estimate also increase about 19% (80 PJ) to 513 PJ.

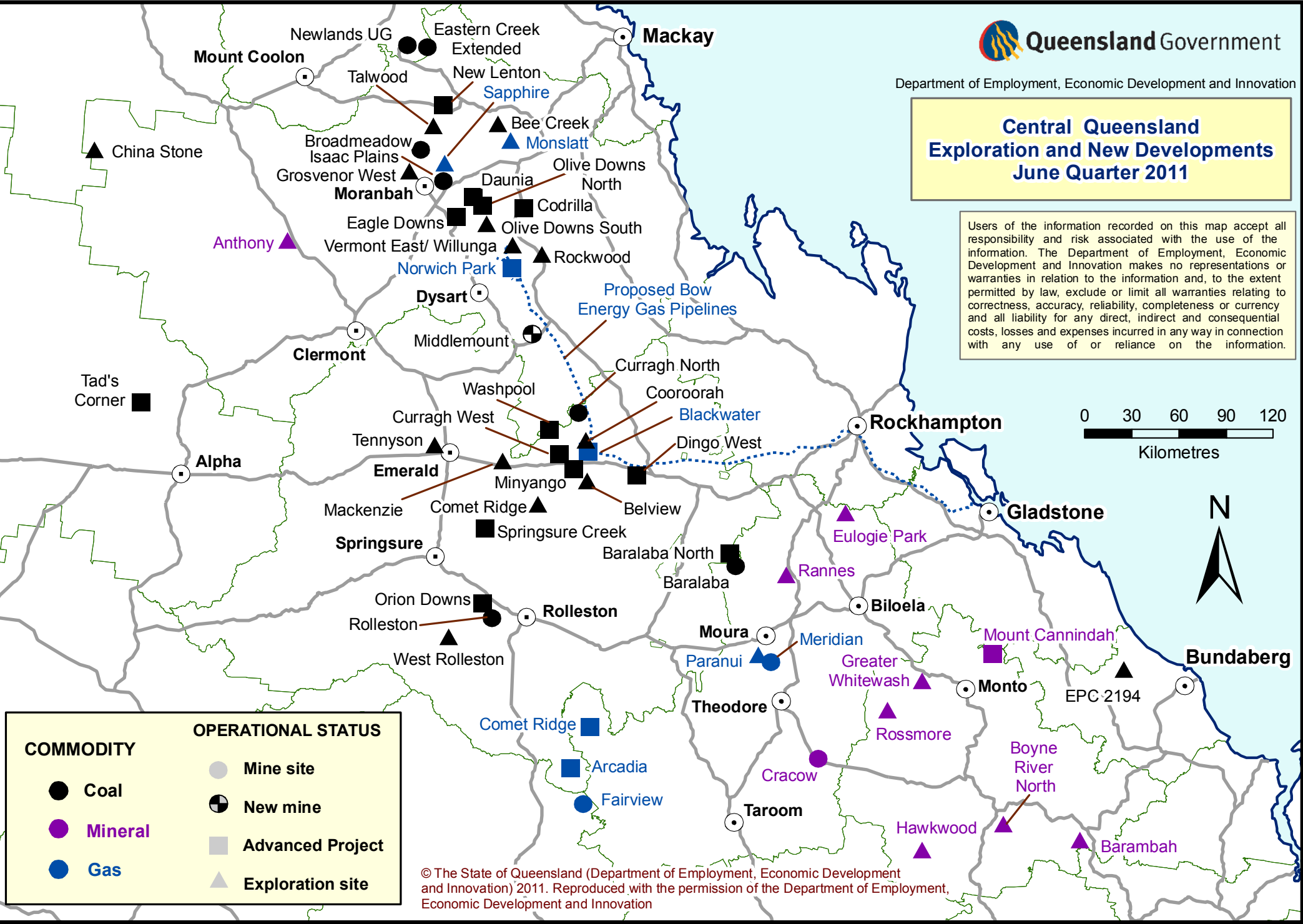
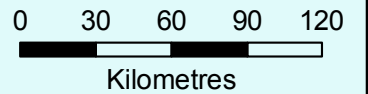
Three new production pilot wells (Paranui-11, 12 and 13) have been completed at the **Paranui** CSG field (**WestSide Corporation Ltd** and **QGC Ltd**) to allow testing of new completion techniques. The initial results have been encouraging with higher than usual water and gas rates while air lifting and cavitating, particularly in the upper seams.








**11<sup>th</sup> August 2011**

Phil Ferenczi  
Regional Geologist  
Central Region

**Central Queensland  
Exploration and New Developments  
June Quarter 2011**

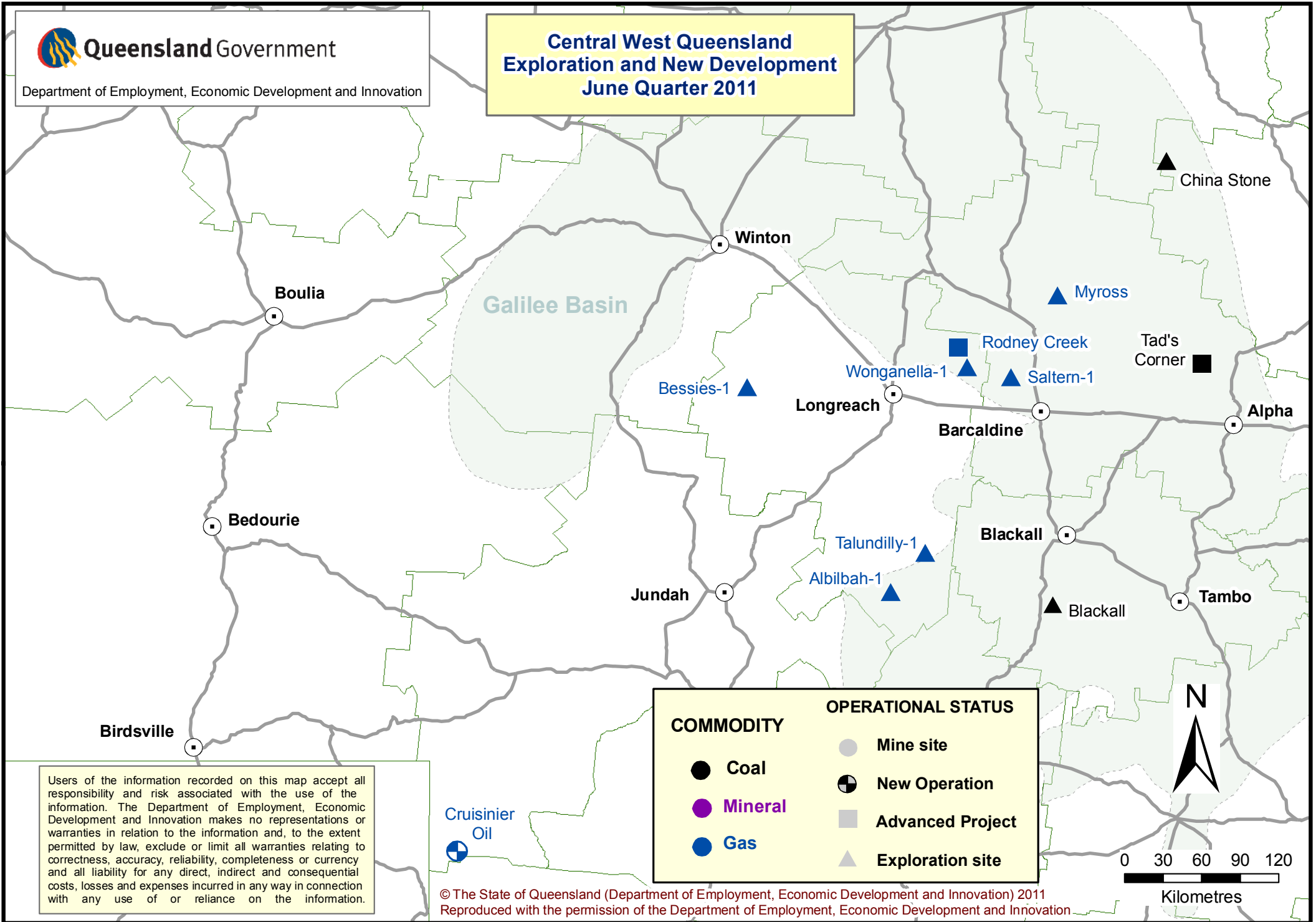
Users of the information recorded on this map accept all responsibility and risk associated with the use of the information. The Department of Employment, Economic Development and Innovation makes no representations or warranties in relation to the information and, to the extent permitted by law, exclude or limit all warranties relating to correctness, accuracy, reliability, completeness or currency and all liability for any direct, indirect and consequential costs, losses and expenses incurred in any way in connection with any use of or reliance on the information.



COMMODITY		OPERATIONAL STATUS	
	Coal		Mine site
	Mineral		New mine
	Gas		Advanced Project
			Exploration site

© The State of Queensland (Department of Employment, Economic Development and Innovation) 2011. Reproduced with the permission of the Department of Employment, Economic Development and Innovation

**Central West Queensland  
Exploration and New Development  
June Quarter 2011**



Users of the information recorded on this map accept all responsibility and risk associated with the use of the information. The Department of Employment, Economic Development and Innovation makes no representations or warranties in relation to the information and, to the extent permitted by law, exclude or limit all warranties relating to correctness, accuracy, reliability, completeness or currency and all liability for any direct, indirect and consequential costs, losses and expenses incurred in any way in connection with any use of or reliance on the information.

Cruisinier  
Oil

COMMODITY		OPERATIONAL STATUS	
	Coal		Mine site
	Mineral		New Operation
	Gas		Advanced Project
			Exploration site

